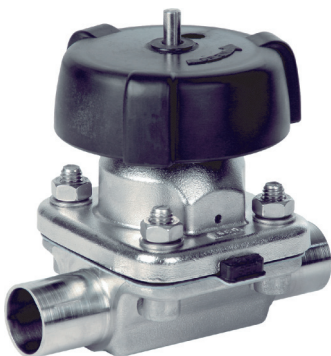


# KMA 995

## Manual Valve DN 15 - 100 mm (1/2" - 4")



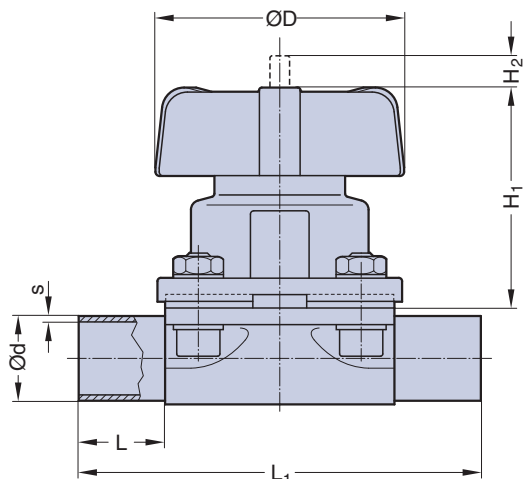
DN 15 - 50

### Features

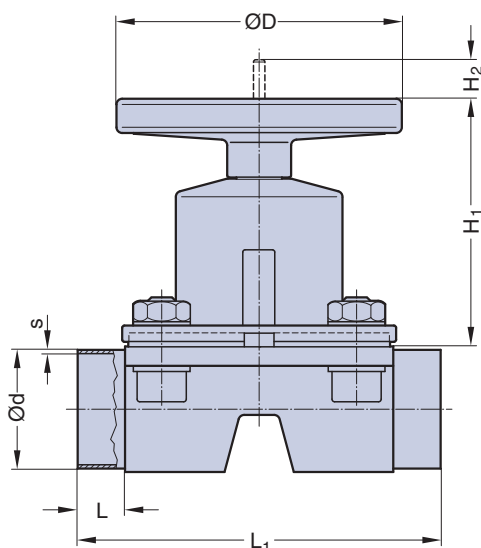
- **Stainless steel bonnet** and **thermoplastic hand wheel**
- Non rising hand wheel with optical indicator
- Circumferential, defined sealing angle between process diaphragm and valve body up to DN 50
- Flexible diaphragm suspension
- Encapsulated diaphragm

### Optional

- Adjustable travel stop or stroke limiter
- Sealed bonnet
- Autoclavable
- Locking device



DN 15 - 50



DN 65 - 100

### Technical Data

- Control function: Manually operated  
 Max. working pressure: 10 bar (150 psi)  
 DN 65-100 diaphragm PTFE 8 bar (120 psi)  
 Max. working temperature: 175°C (350°F) dependent on application  
 Diaphragm material: EPDM or PTFE  
 Valve body material: Forged 1.4435/ 316L ASME/BPE  
 Investment cast 1.4435/ 316L  
 Other Alloys
- End connection: Butt weld ends see fold out page 13  
 Clamps and flanges see page 14 and 15  
 Special ends
- Bonnets suitable for: Two-Way bodies  
 Welded configurations  
 T- bodies  
 Multiport bodies  
 Tank bottom bodies
- Flow rate: Kv in m<sup>3</sup>/h (Cv in GPM) see page 7  
 Diaphragm size: MA see table

DN (mm)	Dimensions (mm)					
	MA	L	L <sub>1</sub>	H <sub>1</sub>	H <sub>2</sub>	D
15-25	25	25	120	71	10	90
32-40	40	25	153	91	14	114
50	50	30	173	110	23	140
65	80	30	216	180	38	198
80	80	30	254	180	38	198
100	100	30	305	220	50	252

Butt weld ends  
 MA 25 - 100  
 Fold out page 13