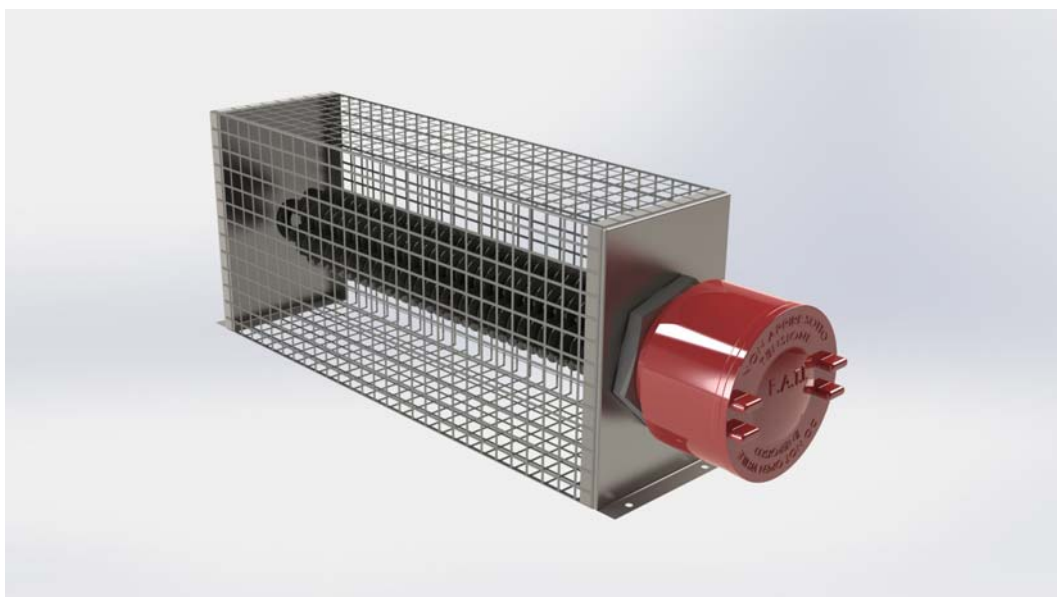


## CONVECTOR HEATERS FOR HAZARDOUS AREA



kW	T4 L(mm)	T3 L(mm)	T2 L(mm)
0,5	1500	750	400
0,75	2250	1125	580
1	3000	1500	750
1,5		2250	1125
2		3000	1500
2,5			1875
3			2250
3,5			2500
4			3000

kW	T4 L(mm)	T3 L(mm)	T2 L(mm)
0,5	1800	770	420
0,75	2700	1150	650
1		1530	850
1,5		2280	1250
2		3000	1680
2,5			2100
3			2500
3,5			2950
4			

These electrical heaters are suitable to heat rooms or small in spaces located in hazardous areas.

The range of heaters offer a solution to a wide variety of applications.

The heaters are certified Eex-d gas groups 11A,11B,11C T2, T3 T4 ATEX 11G in accordance with European Cenelec and IEC standards

EN50014-18 and 60079-0-1

They are also certified by the Russian and Kazakhstan authorities.

There are various materials of construction available to meet individual customers specifications.

Please contact our technical department for advice on any special application.

