

## FEATURES

- Pad-mount version for valve piloting applications
- Incorporation in borers for machine tool manufacturers
- Suitable for dosing/filling applications and industrial washing machines
- Compact solenoid valve for easy installation
- Epoxy moulded coil for general service applications
- Two maximum pressure ratings depending on coil power
- Three manual operator versions
- Flexible installation on joinable subbases
- The solenoid valves satisfy all relevant EC directives

## GENERAL

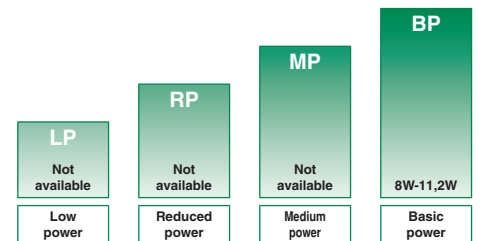
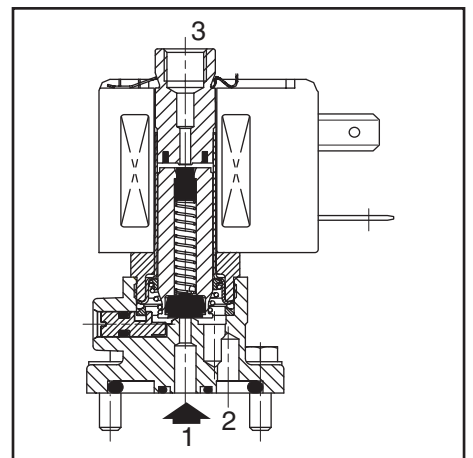
**Differential pressure** See "SPECIFICATIONS" [1 bar =100 kPa]  
**Maximum viscosity** 40 cSt (mm<sup>2</sup>/s)  
**Response time** 8 - 20 ms

fluids (*)	temperature range (TS)	seal material (*)
water, air, inert gas, oil	- 25°C to + 80°C	NBR (nitrile)

## MATERIALS IN CONTACT WITH FLUID

(\*) Ensure that the compatibility of the fluids in contact with the materials is verified

<b>Body</b>	Brass
<b>Internal parts, spring</b>	Stainless steel
<b>Seat</b>	Brass
<b>Seals</b>	NBR
<b>Core guide</b>	POM
<b>Shading coil</b>	Copper



POWER LEVELS - cold electrical holding values (watt)

## SPECIFICATIONS

pipe size	orifice size (mm)	flow coefficient Kv				operating pressure differential (bar)		power level BP		prefix optional solenoids				basic catalogue number		
		1 → 2		2 → 3		min.	max. (PS)		ATEX / IECEx			IP65				
		(m <sup>3</sup> /h)	(l/min)	(m <sup>3</sup> /h)	(l/min)		air/water/oil (*)	~	=	-	Ex e mb		Ex mb		-	
<b>NC - Normally closed</b>																
pad mounting	2,0	0,11	1,8	0,15	2,5	0	16	-	8	-	-	-	-	●	S374A001	
	2,0	0,11	1,8	0,15	2,5	0	-	8	-	10,8	-	-	-	●	S374A061	
	2,0	0,11	1,8	0,15	2,5	0	16	16	10,5	11,2	-	●	●	-	●	S374A016
	2,7	0,22	3,6	0,15	2,5	0	10	-	8	-	-	-	-	-	●	S374A002
	2,7	0,22	3,6	0,15	2,5	0	-	5	-	10,8	-	-	-	-	●	S374A062
	2,7	0,22	3,6	0,15	2,5	0	10	10	10,5	11,2	-	●	●	-	●	S374A017

● Available feature - Not available

**PREFIX TABLE**

prefix							description	power level			
1	2	3	4	5	6	7		LP	RP	MP	BP
E	M						Waterproof IP67 - Metal enclosure (EN/IEC 60079-7+18, 61241-1)* Threaded conduit/hole (M20 x 1,5)	-	-	-	● <sup>(1)</sup>
P	V	E	T				Encapsulated epoxy moulded (EN/IEC 60079-18, 61241-18)* Solenoid with spade plug connector (EN/IEC 60730)	-	-	-	● <sup>(1)</sup>
W	P						Waterproof IP67 - Metal enclosure	-	-	-	● <sup>(1)</sup>
W	S						Waterproof IP67 - 316 SS enclosure	-	-	-	● <sup>(1)</sup>
W	S	E	M				Waterproof IP67 - 316 SS enclosure (EN/IEC 60079-7+18, 61241-1)*	-	-	-	● <sup>(1)</sup>
Z	N						Moulded enclosure (EN 50021, 50281-1-1)* Threaded conduit (1/2" NPT)	-	-	-	● <sup>(1)</sup>
				H	T		Class H - High temperature	-	-	-	● <sup>(1)</sup>
						X	Other special constructions	-	-	-	● <sup>(1)</sup>

**SUFFIX TABLE**

suffix					description	power level			
1	2	3	4	5		LP	RP	MP	BP
E					EPDM (ethylene-propylene)	-	-	-	●
V					FPM (fluoroelastomer)	-	-	-	●
N	V				FPM (fluoroelastomer) and parts cleaned for oxygen service	-	-	-	●
		M	S		Screw type manual operator	-	-	-	●
		M	O		Push type manual operator	-	-	-	●

**OPTIONS & ACCESSOIRES**

catalogue number	spare parts kit n°(2)		screw type manual operator	push type manual operator
	~	=		
S374A001/002	C140160	-	C140048	-
S374A061/062	-	C140161	C140048	-
S374A016/017	C140160	C140160	C140048	-

● Available feature

- Not available

\* ATEX solenoids are also approved according to EN 13463-1 (non electrical valves)

(1) Power level 10,5/11,2: Available feature, see Specifications page 1

(2) Standard suffixes E and V are also applicable to kits

(3) Basic kit number applies to SC coil construction

**PRODUCT SELECTION GUIDE**

**STEP 1**

Select basic catalogue number, including pipe thread identification letter. Refer to the specifications table on page 1.

**Example: S374A016**

**STEP 2**

Select prefix (combination). Refer to the specifications table on page 1 and the prefix table on page 2, respect the indicated power level.

**Example: SC**

**STEP 3**

Select suffix (combination) if required. Refer to the suffix table on page 2, respect the indicated power level.

**Example: MS**

**STEP 4**

Select voltage. Refer to standard voltages on page 3.

**Example: 230V / 50Hz**

**STEP 5**

Final catalogue / ordering number.

**Example:**

**SCS374A016MS 230 V / 50 Hz**

**ORDERING EXAMPLES VALVES:**

SC	S	374	A	016	MS	230V / 50 Hz
SCHT	S	374	A	017		230V / 50 Hz
WS	S	374	A	005	MS	24V / DC
WP	S	374	A	016		24V / DC
EM	S	374	A	017	MS	230V / 50 Hz

prefix — pipe thread — basic number — voltage — suffix

**ORDERING EXAMPLES KITS:**

C140160	(3)
C140160	V
C140160	E

basic number — suffix

**EXPLANATION OF TEMPERATURE RANGES OF SOLENOID VALVES**

Valve temperature range The valve temperature range (TS) is determined by the selected seal material, the temperature range for proper operation of the valve and sometimes by the fluid (e.g. steam)

Operator ambient temperature range The operator ambient temperature range is determined by the selected power level and the safety code

Total temperature range The temperature range of the complete solenoid valve is determined by the limitations of both temperature ranges above

**ELECTRICAL CHARACTERISTICS**

**Coil insulation class** F

**Connector specification** ISO 4400 / EN 175301-803, form A

**Connector** Spade plug (cable Ø 6-10 mm)

**Electrical safety** IEC 335

**Standard voltages** DC (=) 24V - 48V  
AC (~) 24V - 48V - 115V - 230V/50Hz; other voltages and 60Hz are available on request

prefix option	power ratings				operator ambient temp. range (TS) (C°)	safety code	electrical enclosure protection (EN 60529)	replacement coil / kit		type <sup>(1)</sup>
	inrush ~	holding ~		hot/cold =				~	=	
	(VA)	(VA)	(W)	(W)				230 V / 50 Hz	24 V DC	
<b>Basic power (BP)</b>										
SC	23	14	8	8/10,8	-25 to +60	EN 60730	moulded IP65	43005096	43005099	01
SC	55	23	10,5	9/11,2	-40 to +75	EN 60730	moulded IP65	400425-117	400425-142	02
WP	55	23	10,5	9/11,2	-40 to +75	EN 60730	steel IP67	400405-117	400405-142	04
WS	55	23	10,5	9/11,2	-40 to +75	EN 60730	steel IP67	400405-117	400405-142	04
EM/WSEM	55	23	10,5	9/11,2	-40 to +40	II 2G/D Ex emb II T3/Ex tD	steel/SS IP67	400-909-117	400-913-142	04
PV	55	23	10,5	9/11,2	-40 to +65	II 2G/D Ex mb II T3(-)/T4(=)/Ex mD	moulded IP65	- <sup>(2)</sup>	- <sup>(2)</sup>	05

- Not available

<sup>(1)</sup> Refer to the dimensional drawings on pages 4 to 5

<sup>(2)</sup> Multiple coil kits available under ATEX, contact us

**ADDITIONAL OPTIONS**

- Other pipe threads are available on request
- Button type manual operator, use TPL 20655, example: SCXS272A017 TPL20655 (available for all versions)
- Ex mb (prefix "PV") execution can be supplied in various cable lengths
- Brass subbases: Single (1/4), catalogue number **36101001** / Joinable (1/4), catalogue number **36101027**  
Aluminium subbases: Single (1/2), catalogue number **36101029**
- Aluminium supply rail (1/2) for 2 to 6 valves (**36101030** to **36101034**), 8 valves (**36101035**), or 10 valves (**36101036**)
- 1/2" NPT (prefix "T") and M20 x 1,5 (prefix "ET") conduits (aluminium or 316 SS) available for steel solenoid housing

**INSTALLATION**

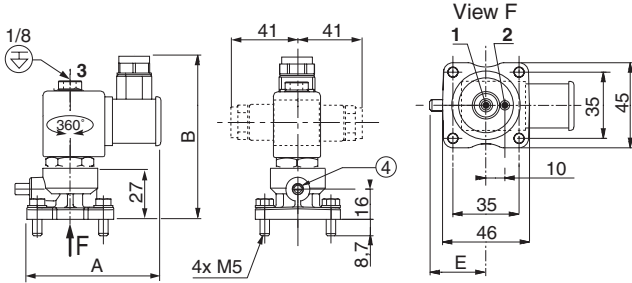
- Installation/maintenance instructions are included with each valve
- The solenoid valves can be mounted in any position without affecting operation
- Mounting on single or joinable subbase or on supply rail, four mounting holes
- ATEX 94/9/EC versions can be installed on single or joinable brass subbases
- Pipe connection G 1/8 has standard thread according to ISO 228/1  
1/4 and 1/2 subbase pipe connections (G\*) have standard combination thread according to ISO 228/1 and ISO 7/1

### DIMENSIONS (mm), WEIGHT (kg)



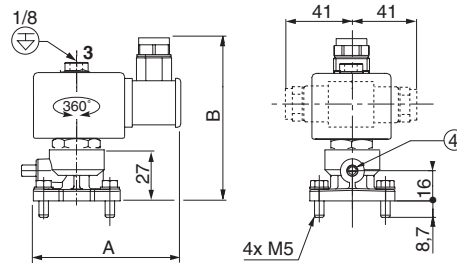
**TYPE 01:**  
SC  
Epoxy moulded  
IEC 335 / ISO 4400

374A001 / 374A061 / 374A002 / 374A062



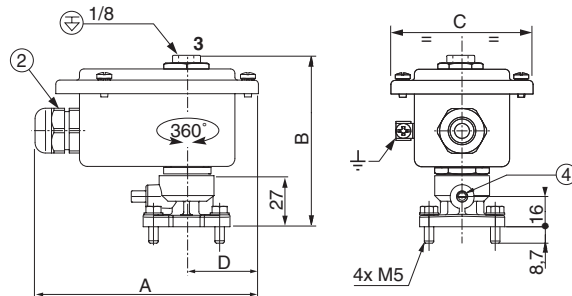
**TYPE 02:**  
SC  
Epoxy moulded  
IEC 335 / ISO 4400

374A016 / 374A017



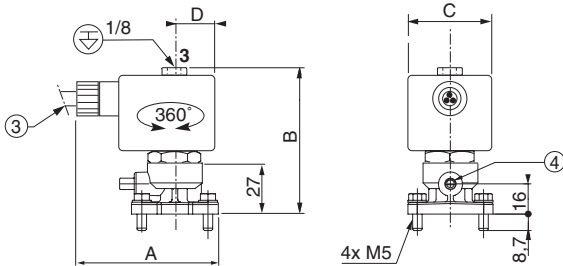
**TYPE 04:**  
WP / WS  
EM / WSEM  
Steel; epoxy coated / AISI 316 SS  
IEC 335 / EN/IEC 60079-7/18 and EN/IEC 61241-1

374A016 / 374A017



**TYPE 05:**  
PV  
Epoxy encapsulated  
EN/IEC 60079-18 and EN/IEC 61241-18

374A016 / 374A017

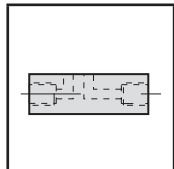


- ① Ex d certified cable gland (on request)
- ② Cable gland for unarmoured cable with 6 to 12 mm dia. sheath
- ③ Three-core cable, length 2 m
- ④ Manual operator location
- ⊕ Connectable pilot exhaust port

type	prefix option	power level	A	B	C	D	E			weight
							screw type	button type	push type	
01	SC	Basic Power	75,5	93,2	-	-	21,5	30	34	0,34
02	SC	Basic Power	86,5	93,2	-	-	21,5	30	34	0,53
04	WP / WS / EM / WSEM	Basic Power	120	93	77	38	21,5	30	34	0,77
05	PV	Basic Power	75	77,4	45	21	21,5	30	34	0,57

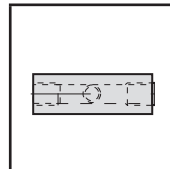
**SUBBASES**

**DIMENSIONS (mm), WEIGHT (kg)**



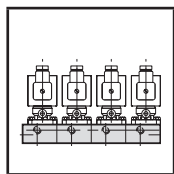
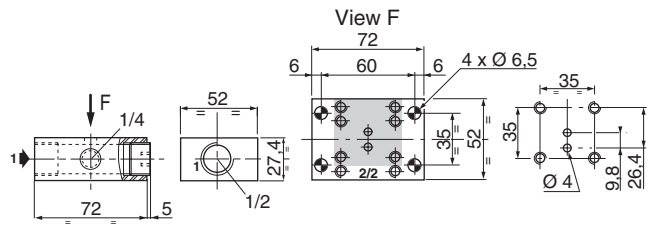
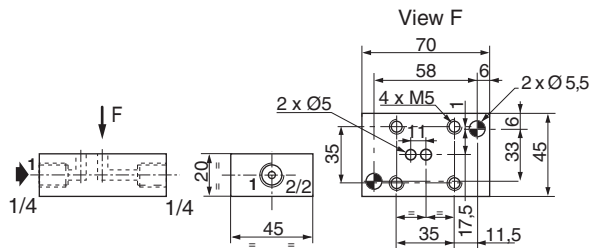
**TYPE 06:**  
Single brass subbase

36101001



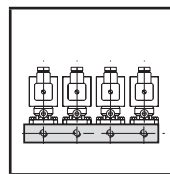
**TYPE 07:**  
Single aluminium subbase

36101029



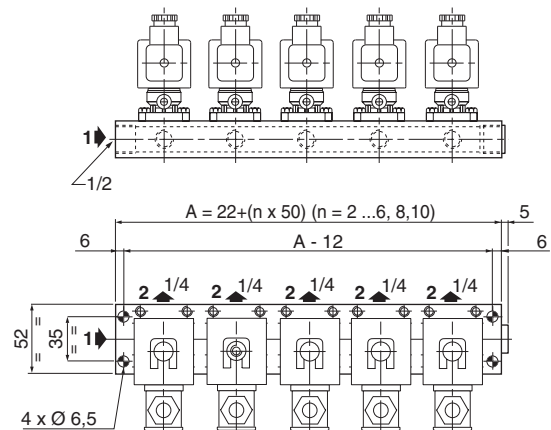
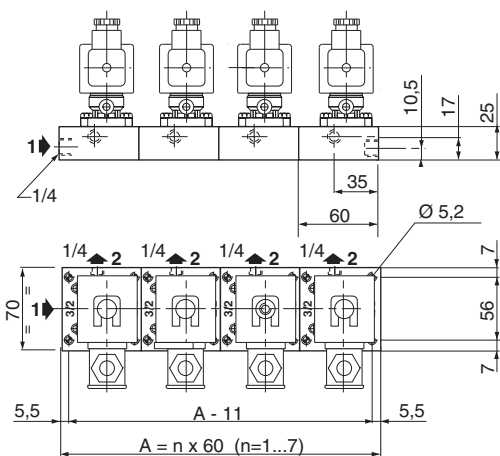
**TYPE 08:**  
(ATEX/IECEx: PV Solenoids)  
Joinable brass subbases

36101027 (unit)



**TYPE 09:**  
Aluminium supply rail

36101030...1036



type	weight	
06	brass subbase	0,453
07	aluminium subbase	0,228

type	weight									
	number of valves									
08	2	3	4	5	6	7	8	9	10	
09	0,379	0,530	0,681	0,832	0,983	-	1,285	-	1,587	