

**FEATURES**

- Miniature solenoid valves for medical and gas analysers and biotechnology equipment
- Designed to control acids, bases and analytical reagents
- Hermetic separation of control mechanism and fluid:
  - Particulate contamination caused by friction of moving parts is excluded
  - Reliable operation in applications with highly aggressive fluids is ensured
- Easy-to-flush internal cavity and good self-draining capability
- Low dead volume
- Low power consumption
- Easy installation

**GENERAL**

**Differential pressure** 0 to +0,5 bar [1 bar =100 kPa]  
**Maximum viscosity** 20 cSt (mm<sup>2</sup>/s)  
**Response time** < 20 ms  
**Dead volume** < 10 µl

fluids (*)	temperature range (TS)	seal materials (*)
liquids or gases (filtered 50 µm)	+10°C to + 40°C	FFPM (perfluoroelastomer)

**MATERIALS IN CONTACT WITH FLUID**

(\*) Ensure that the compatibility of the fluids in contact with the materials is verified

**Body** PEEK  
**Diaphragm** FFPM  
**Seals** FPM

**OTHERS MATERIALS**

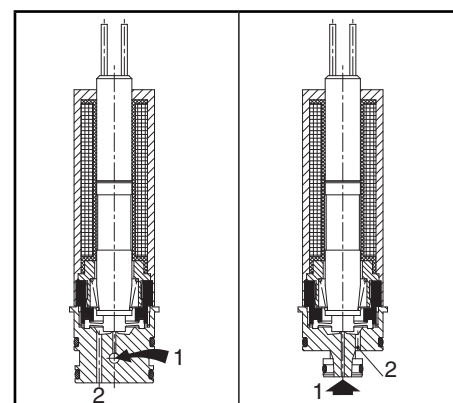
**Internal pieces** Stainless steel

**ELECTRICAL CHARACTERISTICS**

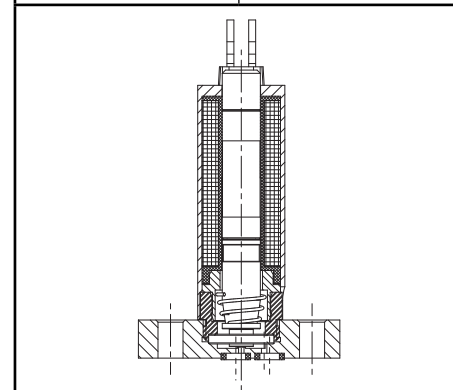
**Coil insulation class** F  
**Connection** Cable ends, length 0,3 m  
**Electrical safety** IEC 335  
**Electrical enclosure protection** IP40 (EN 60529)  
**Standard voltages** DC (=) : 12V - 24V

prefix option	power ratings				operator ambient temperature range (TS) (C°)	replacement coil		type <sup>(1)</sup>
	inrush ~	holding ~		cold =				
	(VA)	(VA)	(W)	(W)				
L	-	-	-	1	+10 to + 40	-	-	01

<sup>(1)</sup> Refer to the dimensional drawings on the following page.



lateral supply (construction type 1)      bottom supply (construction type 2)



pad-mounting body (construction type 3)

**SPECIFICATIONS**

pipe size	orifice size (mm)	flow coefficient Kv (m <sup>3</sup> /h) (l/min)		operating pressure differential (bar)			power coil (W)	catalogue number		
				min.	max. (PS) liquids, gases (*)			lateral supply (construction type 1)	bottom supply (construction type 2)	pad-mounting body (construction type 3)
					=	=				
<b>NC - Normally closed</b>										
8 mm cartridge	0,3	0,0024	0,04	0	0,5	1	LS282A006	LS282A007	-	
	0,5	0,0066	0,11	0	0,5	1	LS282A008	LS282A009	-	
pad mounting	0,5	0,0066	0,11	0	0,5	1	-	-	LS282A010	

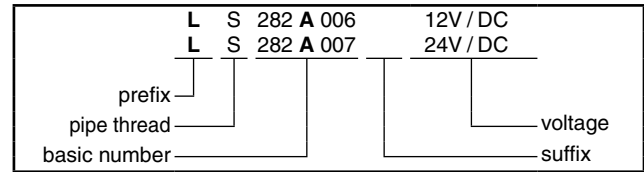
## OPTIONS

• Valves can also be supplied with FPM (fluoroelastomer) and EPDM (ethylene-propylene) seals and diaphragm. Contact us

## INSTALLATION

• The solenoid valves can be mounted in any position without affecting operation

## ORDERING EXAMPLES:



## DIMENSIONS (mm), WEIGHT (kg)



### TYPE 01

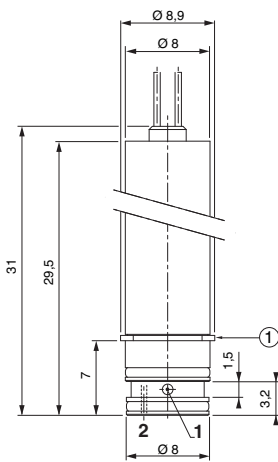
Prefix "L" solenoid  
IEC 335 / with cable ends, length 0,3 m  
IP40  
Weight: 0,00625

LS282A006/A008

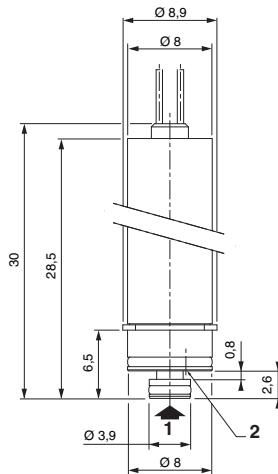
LS282A007/A009

LS282A010

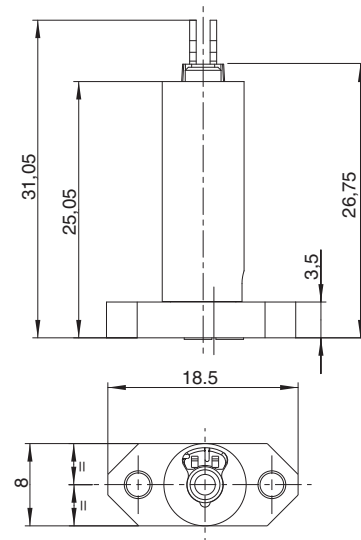
(construction type 1)



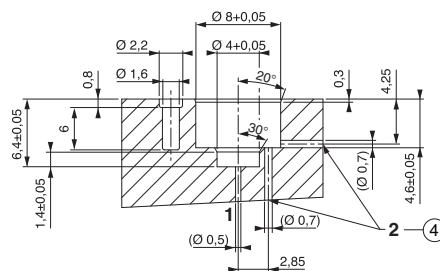
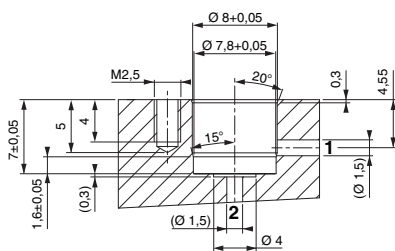
(construction type 2)



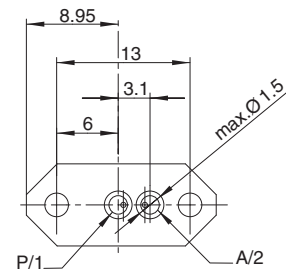
(construction type 3)



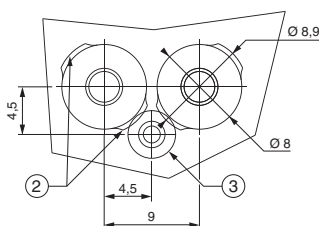
## Mounting geometry



## Pad-mounting pattern



## Mounting pattern



- ① Brackets to fit the valve into the subbase
- ② Bracket positioning grooves in the subbase
- ③ Retaining screw
- ④ Outlet 2: 2 options