

Pipeline Ancillaries

Sight Glasses / Flow Indicators DA 7.00, 7.10



Two Glass Sight Glasses / Flow Indicator

Technical Data

Connection DN	15 - 50
Connection G	1/2 - 2
Nominal Pressure PN	16
Temperature	130 °C
Medium	liquids, gases and steam

Description

Sight glasses without flow indicator may be used for easy checking of fill levels, consistency, bi- or multiphase flows or condensate. They may also be used for mixtures of liquids, gases and vapours.

Flow indicators fitted with a vane can be used for monitoring the flow of liquids, gases and biphasic fluids.

DA 7.00 and DA 7.10 are sight glasses with two glasses. A good view of the fluid is provided by the two opposite glasses. They are manufactured from stainless steel featuring excellent corrosion resistance.

Body and cover are connected by a clamp ring and 2 bolts. Servicing/maintenance is easy and does not call for special tooling.

DA 7.00 sight glass without internal components:

Installation:
» in any position

DA 7.10 Flow indicator with internal vane for uniform flow direction: With graduated scale 1 – 10 for horizontal or vertical installation. Sizes G 1/2 - G 1 or DN 15 - 25 are supplied without return spring; they can be supplied with return spring as an option; return springs can be fitted retrospectively. All other sizes are fitted with return springs as standard equipment.

Installation:
» with spring: in any position
» without spring: horizontal only if vane points downward;
vertical only if flow is upward.

Standard

- » all stainless steel construction
- » quick-release body clamp ring

Options

- » various seal materials suitable for your medium
- » special connections: Aseptic, ANSI or DIN flanges, welding spigots; other connections on request
- » special versions on request

Operating instructions, know how and safety instructions must be observed. All the pressure has always been indicated as overpressure. We reserve the right to alter technical specifications without notice.



Sensivity DA 7.10

with water 20 °C, horizontal installation [m³/h]

nominal diameter G

1/2	3/4	1	1 1/4	1 1/2	2
0.2	0.25	0.3	1.8	1.8	2.3

Sensivity DA 7.10

with water 20 °C, horizontal installation [m³/h]

Nennweite DN

15	20	25	32	40	250
0,2	0,25	0,3	1,8	1,8	2,3

Pipeline Ancillaries

Sight Glasses / Flow Indicators DA 7.00, 7.10

Two Glass Sight Glasses / Flow Indicator



Materials DA 7.00

Temperature	130 °C
Body	CrNiMo-steel
Seals	EPDM, Nova Universal
Glasses	soda lime glasses optional borosilicate glasses
Cover Fastening	profile clamp made of CrNiMo-steel G 2 and DN 50 with screws

Materials DA 7.10

Temperature	130 °C
Body	CrNiMo-steel
Seals	EPDM, Nova Universal
Internals	CrNiMo-steel
Glasses	soda lime glasses optional borosilicate glasses
Cover Fastening	profile clamp made of CrNiMo-steel G 2 and DN 50 with screws

Dimensions [mm]

size	nominal diameter G					
	1/2	3/4	1	1 1/4	1 1/2	2
A*	100	105	140	182	190	225
B	100	100	100	110	110	200
øD	140	140	140	140	140	135
øE	65	65	65	65	65	90

Dimensions [mm]

size	nominal diameter DN					
	15	20	25	32	40	50
A*	170	180	215	220	226	230
B	100	100	100	110	110	200
øD	140	140	140	140	140	135
øE	65	65	65	65	65	90

Weights [kg]

nominal diameter G						nominal diameter DN					
1/2	3/4	1	1 1/4	1 1/2	2	15	20	25	32	40	50
1.4		1.6		2.5	2.7	3.3	3.7	5	5.3	6.8	

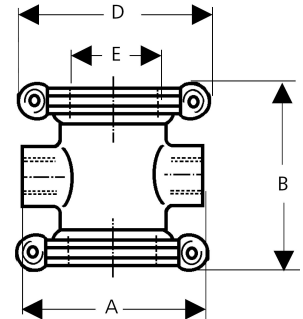
Special designs on request.

The pressure has always been indicated as overpressure.

Mankenberg reserves the right to alter or improve the designs or specifications of the products described herein without notice.

Dimensional Drawing

sleeve



flange

