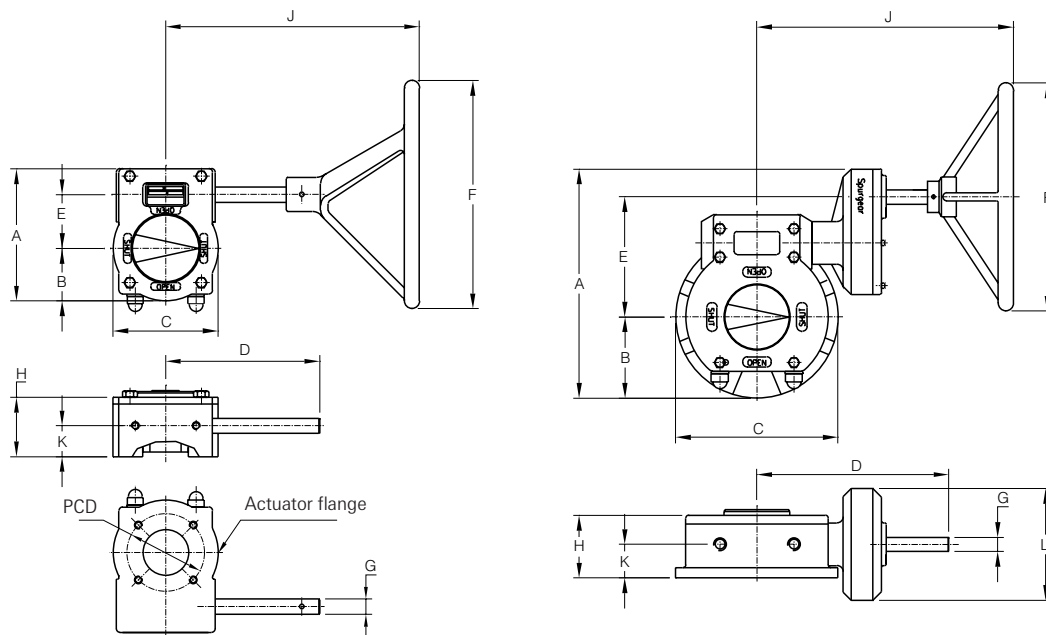


# KEYSTONE



**Torque values in Nm**

Type	Ratio	Max. output torque	Input torque	Hand-wheel dia.
WU-004	37:1	330	28,5	150
WU-009	34:1	1000	83	300
WU-016	38:1	2000	152	300
WU-026	55:1	3250	171	400
WU-042	84:1	4500	159	500
WU-068*	208:1	6800	125	400
WU-083	78:1	8400	305	600
WU-125*	312:1	12500	134	400
WU-250*	705:1	32000	142	600
WU-500*	1500:1	50000	110	600

**Gearunit data in mm**

Type	PCD	Thread dia.	Number of holes	Shafthole dimensions	Key dimensions
WU-004	82.6	M8	4	19.05 x DD 12.7 **	-
WU-009	127	M12	4	28.6	6.35
WU-016	127/165	M12/M20	4	34.9/41.3	7.94/9.52
WU-016	127/165	M12/M20	4	41.3/47.6	12.7
WU-026	127/165	M12/M20	4	34.9/41.3/47.6	7.94/9.52/12.7
WU-042	165/254	M20/M16	4/8	41.3/47.6/57.1	9.52/12.7/12.7
WU-042	165/254	M20/M16	4/8	60/63.5	18/15.9
WU-068*	165/254	M20/M16	4/8	47.6/57.1/65/63.5	12.7/12.7/18/15.9
WU-068*	203	M20	4	69.8/75	15.9/20
WU-068*	210	M20	4	60	18
WU-125*	165	M20	4	57.1	12.7
WU-125*	210	M20	4	75	20
WU-125*	247.6	M24	4	88.9	22.2

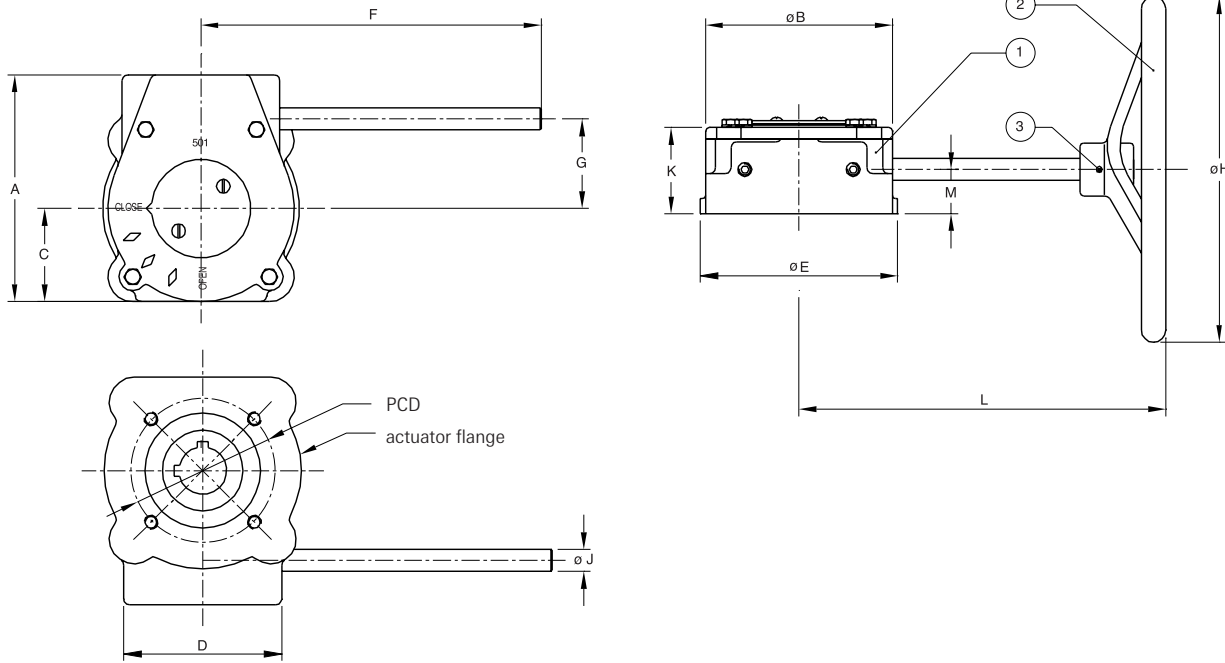
**Note**

- \* Gearunit with spur gear.
- \*\* Adaptors to smaller shaft holes.

**Gear dimensions in mm**

Type	A	B	C	D	E	F	G	H	J	K	L	Mass kg
WU-004	127,5	48	102	159	52	150	15	38	203	28,6	-	4
WU-009	174	69	138	201	71	300	20	45	332	40,5	-	9,5
WU-016	226	100	200	189	86	300	20	82	320	42	-	15
WU-026	258	110	220	230	105	400	20	91	326	48	-	23
WU-042	322	142	285	275	130	500	25	110	387	55	-	33
WU-068*	405	142	285	335	211	400	25	110	427	55	200	46
WU-083	407	170	370	300	182	600	25	121	412	59	-	58
WU-125*	482	170	370	388	263	400	25	122	480	59	200	71
WU-250*	585	235	510	499	431	600	30	169	612	85	178	227
WU-500*	639	239	560	650	450	600	30	200	762	140	280	400

# Gearunit Figure 422 - Type CU



## Gearunit dimensions in mm

Type	A	B	C	D	E	F	G	H	J	K	L	M	Mass kg
CU 024	127	105	54	88	105	156	45	150	15.88	55	186	28	4.5
CU 030	177	152	77	118	152	295	66	300	19.05	71	327	34	9.1
CU 050	197	162	81	137	173	295	78	300	19.05	76	318	38	14.0

## Torque values in Nm

Type	Torque output*	Gear ratio	Maximum torque output
CU 024	170	24:1	226
CU 030	565	30:1	678
CU 050	791	50:1	1356

\* Torque output is based on a handwheel rimpull of 550 N (= face at one side).

## Actuator flange dimensions F422

Type	PCD	Thread size	Number of holes	Shafthole dimension	Suitable for non-ISO valve sizes
CU 024	82.6	M10	4	ø14.3x9.5	50-80
	82.6	M10	4	ø15.9x11.1	100
	82.6	M10	4	ø19.1x12.7	125-150
CU 030	127.0	M12	4	ø22.2x15.9	200
	127.0	M12	4	ø28.6x6.4 key	250-300
CU 050	127.0	M12	4	ø41.3x12.7 key	400
	127.0	M12	4	ø34.9x7.9 key	250-300
	127.0	M12	4	ø41.3x9.5 key	350-400

## Material specification

Part	Description	Material	WM
1	Gearoperator	-	-
	Housing	Cast Iron	Cast Iron
	Input Shaft	Carbon Steel	Carbon Steel
	Quadrant (output shaft)	Ductile Iron	Ductile Iron
2	Handwheel	Cast Iron	Cast Iron
3	Roll pin	Stainless Steel	Stainless Steel