

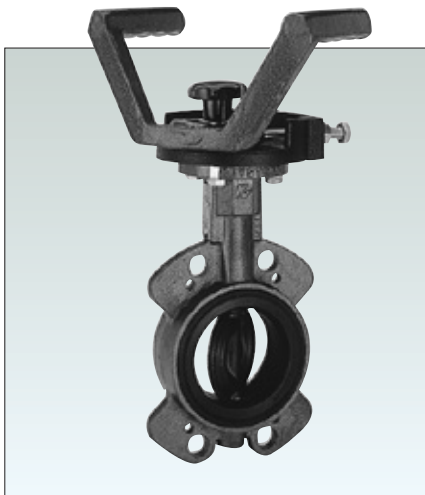


KEYSTONE

A sturdy manual operator with double grips, suitable for all quarter-turn valves with an ISO 5211 top plate.

Features

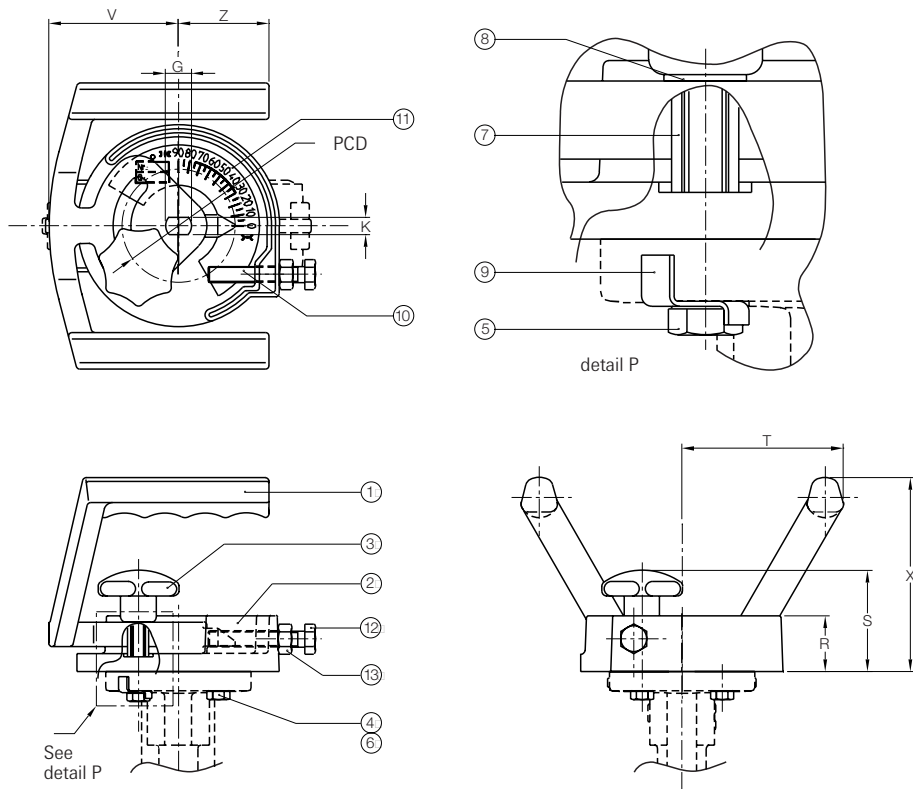
- Short turning circle
- Continuous adjustable
- Can be locked in any position
- Raised grips facilitate operation with insulated piping
- Solid design
- Integrated position indicator
- Clear indication of disc position
- Allows building very compact distribution units
- Ergonomic shaped grips ensure efficient and ease of operation



Application

The Twin Grip is suitable for all quarterturn valves which require manual operators, particularly when only limited space is available. Typical examples are distribution units and risers in HVAC installations and other applications where pipes are close together.

Manual operator Figure 415 Twin Grip trim 532



Part Name

1. Handle
2. Adjusting plate
3. Star grip
4. Spring washer
5. Screw
6. Screw
7. Spacer
8. Plain washer
9. Security plate
10. Screw
11. Information plate
12. Screw
13. Nut

Handle dimensions in mm

Type	For valve sizes	shafthole		actuator flange conn.acc. ISO 5211/1				R	S	T	V	X	Z	Mass (kg)
		G	K	Type	PCD	hole								
		ø												
415-025	65-100	16	11	F07	70	9	34,5	66	100	80	120	56	3.2	
415-050	125-150	20	14	F07	70	9	34,5	66	100	80	120	56	3.2	

Material selection

Twingrip	Indicator cap	Stargrip	Mounting mat.	Trim no.	Sizes(mm)
Ductile Iron	Cast Iron	Bakelite with steel insert	Stainless Steel	532	65-150

Material specification

Name	Material	DIN designation	DIN mat. no.
Handle	Ductile Iron	GGG 40	0.7040
Adjusting plate	Cast Iron	GG-25	0.6025
Stargrip	Bakelite with steel insert		
Spring washer	Stainless Steel	X5CrNiMo 17 12 2	1.4401
Screw	Stainless Steel	X5CrNiMo 17 12 2	1.4401
Screw	Steel	St. 8.8	
Spacer	Stainless Steel	X5CrNiMo 17 12 2	1.4401
Plain washer	Stainless Steel	X5CrNiMo 17 12 2	1.4401
Security plate	Steel zinc coated	St 12.03/st 37 zinc coated	
Screw	Steel	St. 8.8	
Information plate	Aluminium (anodized)		
Screw	Stainless Steel	X 5 CrNi 18 10	1.4301
Nut	Stainless Steel	X 5 CrNi 18 10	1.4301

Notes

1. The small turning circle of 230 mm allows assembly to valves on close positioned pipelines.
2. The Figure 415 is designed to fulfill requirements of the HVAC market.
3. Maximum allowable torque on one grip is 220 Nm.
4. For Figure 28/38 the Figure 415-050 can be used for sizes 125-200 mm.