

INTERVALVE

Pressure seal tilting disc and swing check valves, suitable for the arduous services and high temperatures encountered in power industry applications

Features

- ASME B16.34 design, offered in swing check and tilting disc configurations in 4 standard cast body materials.
- Easy assembly increased by a pressure seal closure with threaded ring (in small sizes) or segmental ring (in larger sizes, depending on pressure ratings).
- Pressure seal-type closure of hinge pin.
- Seat and disc are stellite gr. 6.
- Seats are welded in.

Swing Check:

- Disc is equipped with standard anti-rotation device.
- Friction ring in the connection between hinge and disc.

Tilting Disc:

- Disc is equipped with a dome to balance the weight.
- Spring-assisted closure to avoid slamming.



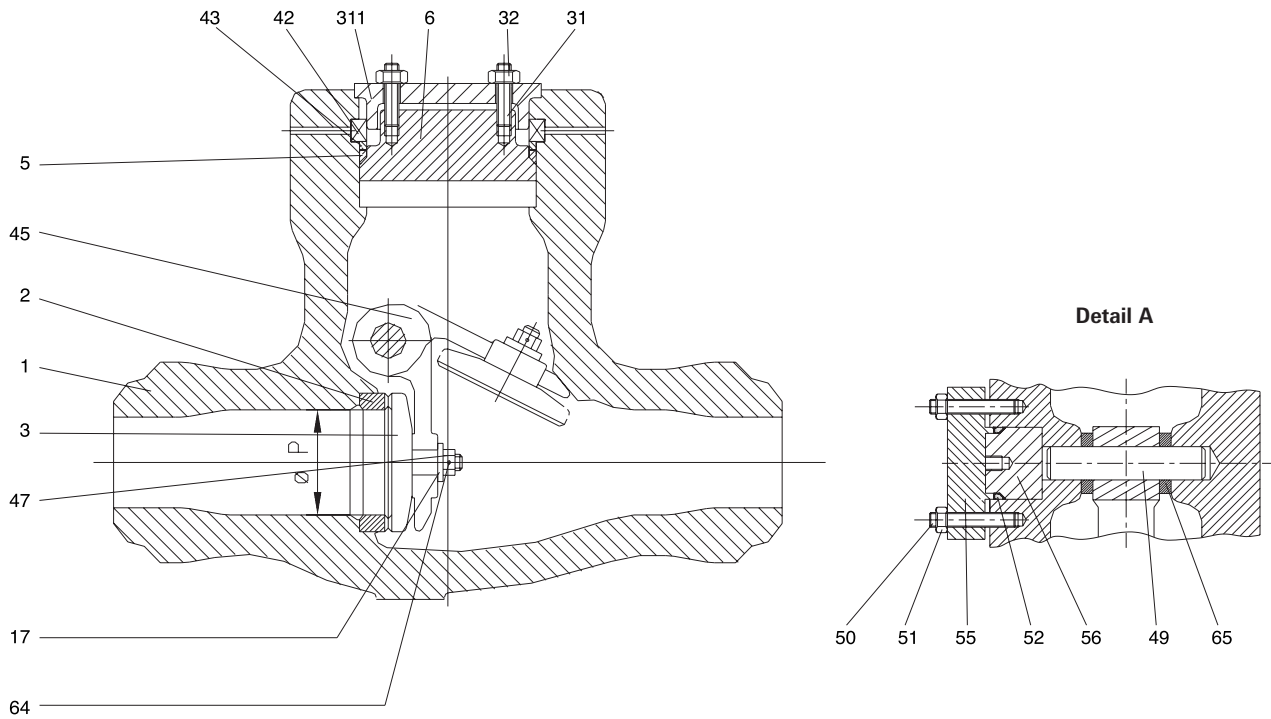
Technical data

Pressure ratings	: ASME classes 900 & 1500 (swing check); 1500 & 2500 (tilting disc)
Body materials	: A216 WCB, A217 WC6, A217 WC9, A217 C12A
Temperature (°C)	: -46 to +650
Sizes	: DN50 to DN400 for swing check; DN50 to DN600 for tilting disc
Connections standards	: ASME B16.25

General application

Recommended for power plant applications which require flow reversal prevention.

Swing Check Configuration



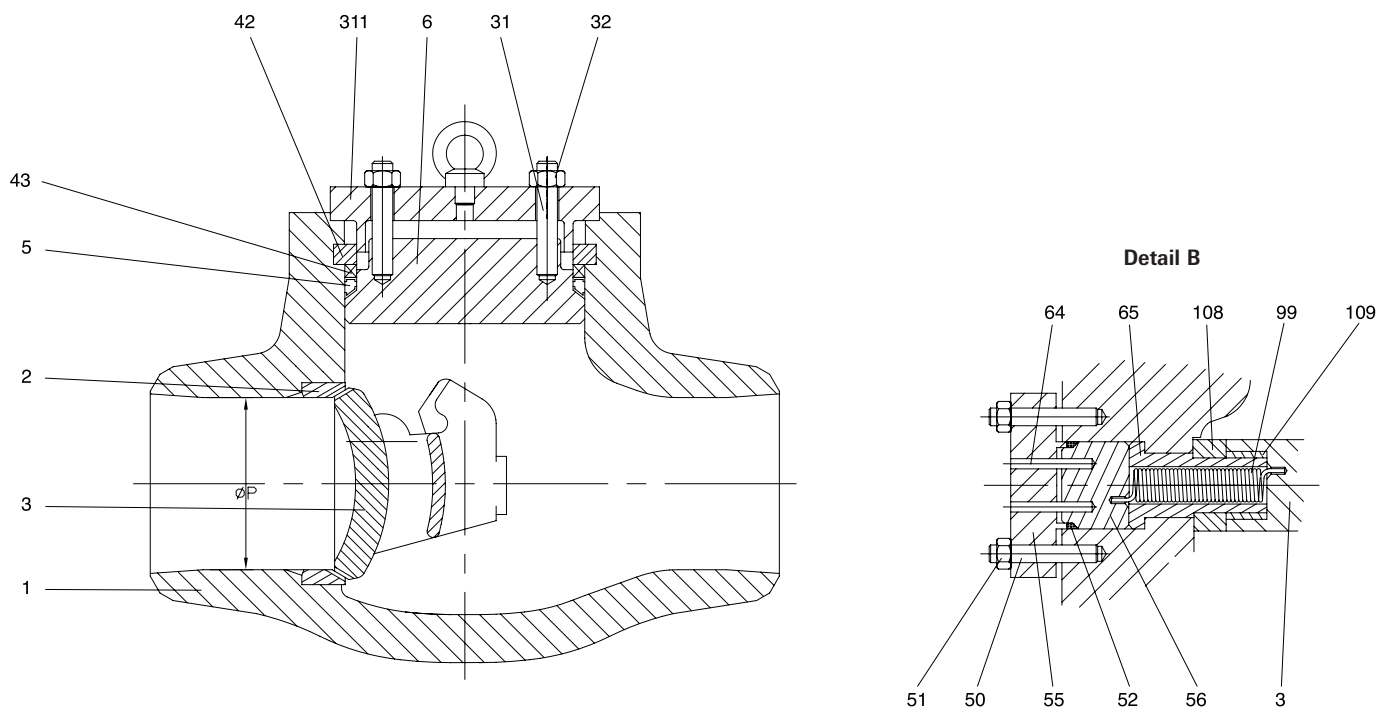
Material specifications

Ref	Description	Body Mat.: WCB	Body Mat.: WC6	Body Mat.: WC9	Notes
1	Body	A 216 WCB	A 217 WC6	A 217 WC9	
2	Seat	A 105 + Stellite gr. 6	A 182 F22 + Stellite gr. 6	A 182 F22 + Stellite gr. 6	(1)
3	Disc	A 105 + Stellite gr. 6	A 182 F22 + Stellite gr. 6	A 182 F22 + Stellite gr. 6	
5	Gasket	316 reinforced graphite	316 reinforced graphite	316 reinforced graphite	
6	Bonnet	A 105	A 182 F22	A 182 F22	
17	Washer	A 182 F316	A 182 F316	A 182 F316	
31	Cover bolting	A 193 B7	A 193 B16	A 193 B16	
32	Cover nut	A 194 2H	A 194 gr. 4	A 194 gr. 4	
42	Segment ring	A 182 F22	A 182 F22	A 182 F22	(2)
43	Intermediate thrust ring	A 182 F22	A 182 F22	A 182 F22	(2)
45	Hinge	A 216 WCB	A 217 WC9	A 217 WC9	
47	Disc nut	A 194 2H	A 194 gr. 4	A 194 gr. 4	
49	Hinge pin	A 182 F6a Cl 2	A 565 gr 616HT	A 565 gr 616HT	
50	Plug bolting	A 193 B7	A 193 B16	A 193 B16	
51	Plug nut	A 194 2H	A 194 gr. 4	A 194 gr. 4	
52	Pin gasket	316 reinforced graphite	316 reinforced graphite	316 reinforced graphite	
56	Pressure seal plug	A 105	A 182 F22	A 182 F22	
55	Flange	A 105	A 182 F22	A 182 F22	
64	Pin	F316	F316	F316	
65	Spacer	A 182 F316	A 182 F316	A 182 F316	
311	Retaining ring	A 105	A 105	A 105	(2)

Notes

1. Seats are welded in.
2. Applicable for sizes from DN150 to DN400 (ASME Class 900-1500).

Tilting Disc Configuration



Material specifications

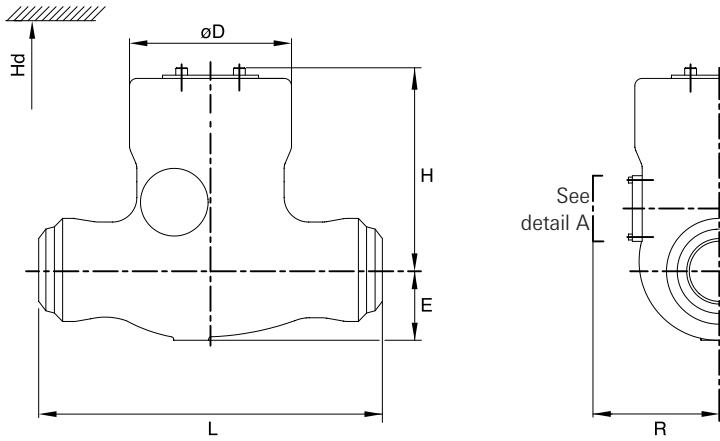
Ref	Description	Body Mat.: WCB	Body Mat.: WC6	Body Mat.: WC9	Notes
1	Body	A 216 WCB	A 217 WC6	A 217 WC9	
2	Seat	A 105 + Stellite gr. 6	A 182 F22 + Stellite gr. 6	A 182 F22 + Stellite gr. 6	(1)
3	Disc	A 216 WCB + Stellite gr. 6	A217 WC9 + Stellite gr. 6	A217 WC9 + Stellite gr. 6	
5	Gasket	316 reinforced graphite	316 reinforced graphite	316 reinforced graphite	
6	Bonnet	A 105	A 182 F22	A 182 F22	
31	Cover bolting	A 193 B7	A 193 B16	A 193 B16	
32	Cover nut	A 194 2H	A 194 gr. 4	A 194 gr. 4	
42	Segment ring	A 182 F22	A 182 F22	A 182 F22	
43	Intermediate thrust ring	A 182 F22	A 182 F22	A 182 F22	
50	Plug bolting	A 193 B7	A 193 B16	A 193 B16	
51	Plug nut	A 194 2H	A 194 gr. 4	A 194 gr. 4	
52	Pin gasket	316 reinforced graphite	316 reinforced graphite	316 reinforced graphite	
56	Pressure seal plug	A 105	A 182 F22	A 182 F22	
55	Flange	A 105	A 182 F22	A 182 F22	
64	Pin	F316	F316	F316	
65	Spacer	A 182 F6a	A565 gr 616HT	A565 gr 616HT	
99	Spring	Stainless steel	Stainless steel	Stainless steel	
108	Bushing	A 182 F6a	A565 gr 616HT	A565 gr 616HT	
109	Bearing bushing	A 182 F22 + Stellite	A 182 F22 + Stellite	A 182 F22 + Stellite	
311	Retaining ring	A 105	A 105	A 105	

Note

Seats are welded in.

Pressure Seal Cast Check Valves -Style A- Swing Check and Tilting Disc

Swing Check Configuration



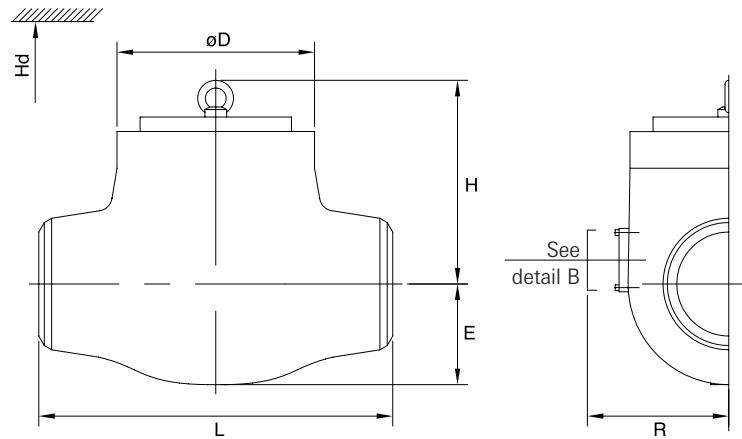
Dimensions and weights - ASME Class 900

Size (mm)	diam ØP	L	H	R	Hd	E	diam ØD	Weight (Kg)
50	51	330	230	225	335	65	160	35
65	51	330	230	225	335	65	160	35
80	68	305	240	240	365	70	170	45
100	88	432	265	235	415	85	192	52
150	131	508	310	330	530	115	270	115
200	171	661	405	435	685	145	340	280
250	214	787	455	500	800	170	396	380
300	254	914	475	530	860	200	420	560
350	280	991	540	560	975	225	516	665
400	320	1,092	620	695	1,120	250	580	950

Dimensions and weights - ASME Class 1500

Size (mm)	diam ØP	L	H	R	Hd	E	diam ØD	Weight (Kg)
50	51	330	230	225	335	65	160	35
65	51	330	230	225	335	65	160	35
80	65	381	235	235	360	75	170	53
100	83	457	260	265	415	95	230	60
150	123	559	350	360	560	125	285	140
200	160	711	440	435	710	170	380	360
250	200	864	490	500	825	190	430	465
300	237	991	535	560	930	225	500	790
350	260	1,067	595	615	1,025	245	540	1,040
400	297	1,194	700	725	1,190	275	620	1,490

Tilting Disc Configuration



Dimensions and weights - ASME Class 1500

Size (mm)	diam ØP	L	H	R	Hd	E	diam ØD	Weight (Kg)
50	57	254	185	220	360	80	170	60
80	70	305	185	210	350	120	185	65
100	92	406	295	245	400	110	215	110
150	137	559	380	275	500	145	260	270
200	178	711	460	350	620	180	365	530
250	222	864	610	410	680	230	455	780
300	264	991	700	460	800	260	480	1,210
350	289	1,067	730	470	840	280	510	1,490
400	330	1,194	790	600	950	335	665	2,170
450	371	1,346	840	640	1,070	380	745	2,825
500	416	1,473	900	695	1,200	445	860	4,150
600	498	1,500	980	800	1,380	565	990	5,200

Dimensions and weights - ASME Class 2500

Size (mm)	diam ØP	L	H	R	Hd	E	diam ØD	Weight (Kg)
50	57	330	160	220	360	80	170	60
80	57	368	160	220	360	80	170	65
100	73	457	185	210	350	120	185	105
150	111	610	360	290	500	165	285	245
200	146	762	360	350	580	180	365	520
250	184	914	450	370	650	210	420	860
300	219	1,041	580	425	740	250	465	1,250
350	241	1,118	620	440	800	275	520	1,750
400	276	1,245	775	575	920	335	560	2,350
450	311	1,397	855	550	1,010	345	650	3,200
500	343	1,500	890	625	1,150	385	710	4,540
600	413	1,500	970	680	1,270	465	815	5,700

Note

All dimensions are in mm and weight is in kilos.