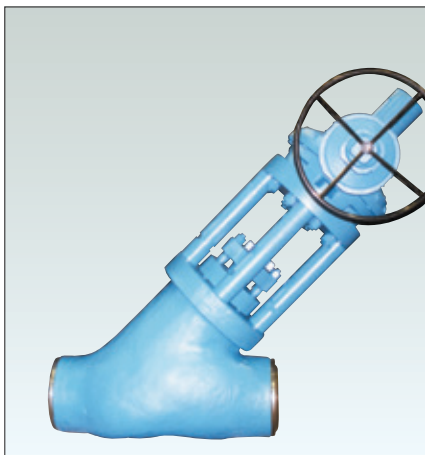


## SAPAG

**Pressure seal, Y pattern globe valves, suitable for the arduous services and high temperatures encountered in power industry applications.**

### Features

- Pressure seal Y pattern globe valves designed in compliance with ASME B16.34.
- Offered in four standard cast materials.
- Integral seat.
- Maximum ease for actuator/bevel gear assembly provided by standard ISO top mounting.
- Disc is fully guided on body, and hardfaced with stellite gr 6.
- Standard position indicator.
- Available on request: parabolic disc, limit switch in open or closed position, stop check execution.
- Pressure seal gasket in graphite with integral stainless steel anti-extrusion protection to minimize the risk for fugitive emissions.



### Technical data

Pressure ratings	: ASME classes 1500 and 2500
Body materials	: A216 WCB, A217 WC6, A217 WC9, A217 C12A
Temperature (°C)	: -46 to +650
Sizes (mm)	: 50 to 400 (2"-16")
Connections standards	: ASME B16.25

### General application

Specifically indicated for feed water and steam applications, especially when reaching elevated temperature and pressure.

Globe Valve Y Pattern Configuration

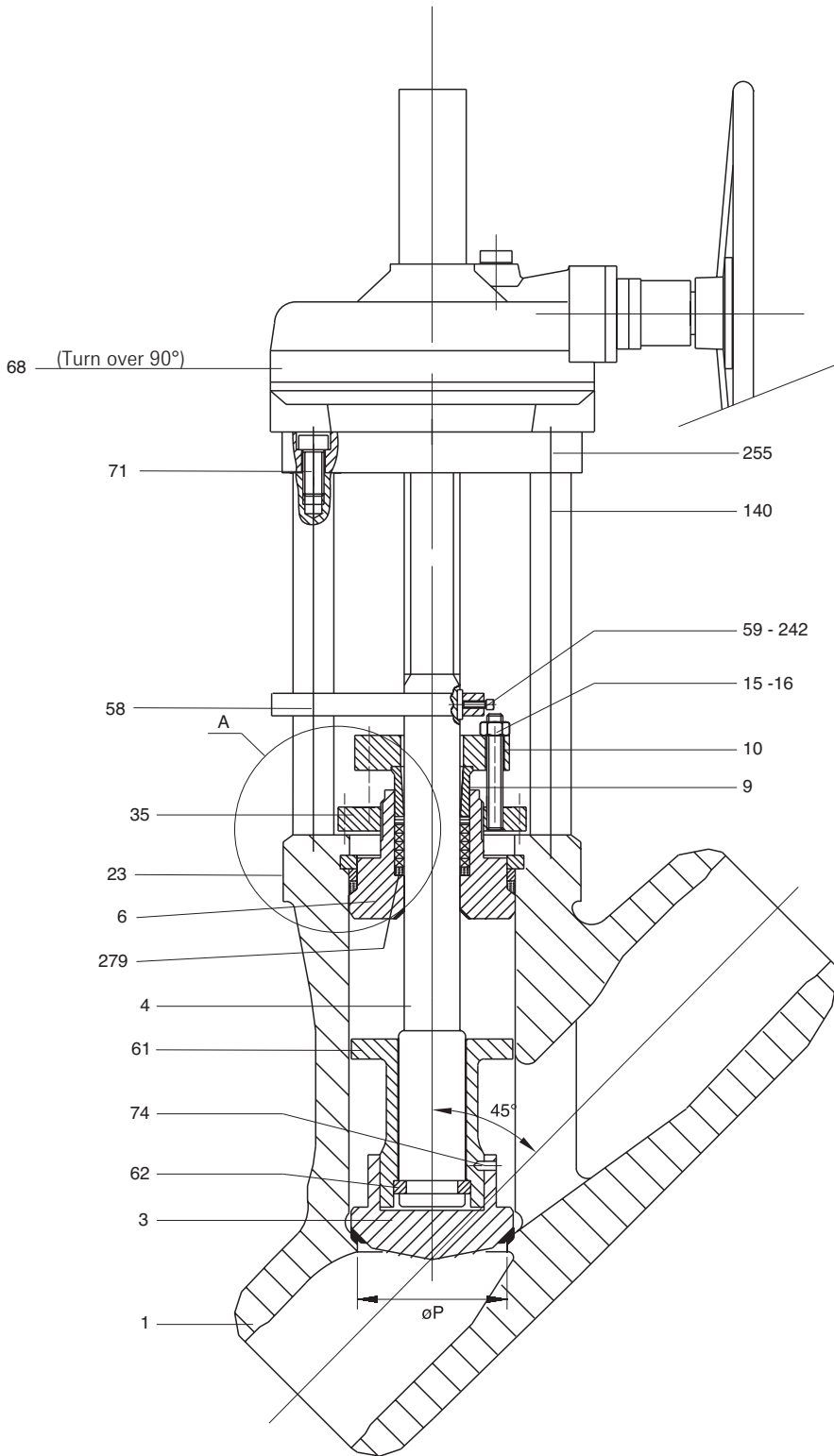
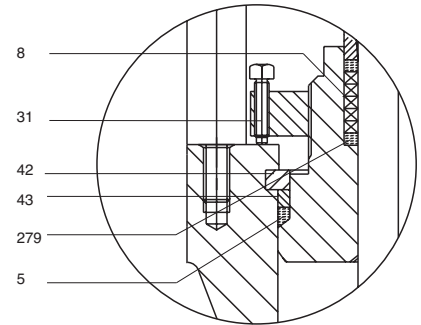


Fig. 1



Detail A

Fig. 2

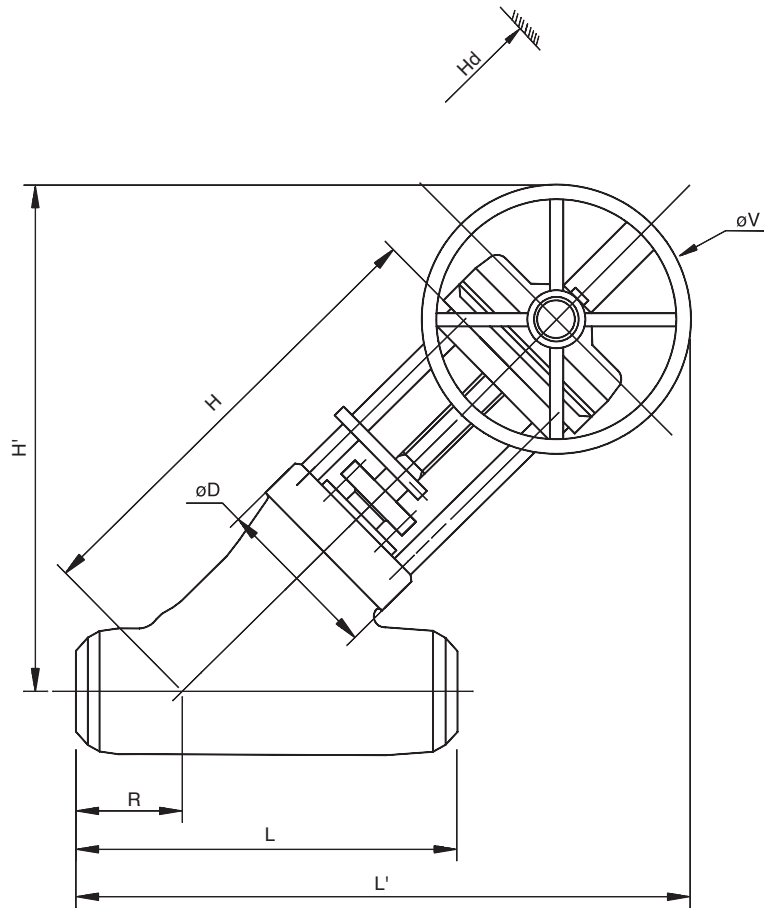
Material specifications

Ref	Description	Body Mat.: WCB	Body Mat.: WC6	Body Mat.: WC9
1	Body (1)	A 216 WCB + Stellite gr. 6	A 217 WC6 + Stellite gr. 6	A 217 WC9 + Stellite gr. 6
3	Disc	A 105 + Stellite gr. 6	A 182 F22 + Stellite gr. 6	A 182 F22 + Stellite gr. 6
4	Stem	A 182 F6a Cl2	A 565 gr 616HT	A 565 gr 616HT
5	Gasket	316 reinforced graphite	316 reinforced graphite	316 reinforced graphite
6	Bonnet	A 105 + Stellite gr. 21	A 182 F22 + Stellite gr. 21	A 182 F22 + Stellite gr. 21
8	Packing	Graphite	Graphite	Graphite
9	Gland	A 182 F6a Cl 2	A 182 F6a Cl 2	A 182 F6a Cl 2
10	Gland flange	A 516 gr 70	A 516 gr 70	A 516 gr 70
15	Gland bolts	A 193 B7	A 193 B7	A 193 B16
16	Gland nuts	A 194 2H	A 194 2H	A 194 4
23	Name Plate	Stainless steel	Stainless steel	Stainless steel
31	Bonnet screw	A 193 B7	A 193 B16	A 193 B16
35	Bonnet retaining flange	A 105	A 105	A 105
42	Segment ring	A 182 F22	A 182 F22	A 182 F22
43	Intermediate thrust ring	A 182 F22	A 182 F22	A 182 F22
58	Position indicator	A 105	A 105	A 105
59	Screw	A 193 B7	A 193 B7	A 193 B7
61	Disc guide	A 105	A 182 F22	A 182 F22
62	Stem half ring	A 182 F6a Cl2	A 565 gr 616HT	A 565 gr 616HT
68	Bevel Gear	(2)	(2)	(2)
71	Screw	A 193 B7	A 193 B7	A 193 B7
74	Screw	A 193 B8	A 193 B8	A 193 B8
140	Column	42CrMo4	42CrMo4	42CrMo4
242	Key	Key steel	Key steel	Key steel
255	Adaptation flange	A 516 gr 70	A 516 gr 70	A 516 gr 70
279	Bottom ring	A 182 F6a Cl 2	A 182 F6a Cl 2	A 182 F6a Cl 2

Notes

1. Seat is integral.
2. Thrust bearing in steel; case in ductile iron.

# Pressure Seal Cast Globe Valves -Style A- Y pattern



## Dimensions and weights - ASME Cl. 1500

Size (in.)	diam-P	L	H	R	diam-D	diam-V	L'	H'	HD	Weight (Kg)
2 1/2	70	419	550	120	150	500	811	591	1041	95
3	70	470	550	130	150	500	821	691	1041	100
4	92	546	675	155	195	400	897	742	1188	190
6	137	705	860	200	290	700	1239	1039	1669	465
8	178	832	1030	235	370	700	1423	1188	1989	750
10	222	991	1050	280	485	600	1475	1195	2145	1050
12	263	1130	1400	320	535	600	1782	1442	2403	1970
14	289	1257	1650	350	570	400	1982	1632	2832	2590
16	330	1384	1950	390	630	400	2234	1844	3134	3620

## Dimensions and weights - ASME Cl. 2500

Size (in.)	diam-P	L	H	R	diam-D	diam-V	L'	H'	HD	Weight (Kg)
2 1/2	57	508	550	145	165	400	774	629	979	100
3	57	578	550	165	165	400	794	629	979	105
4	73	673	620	190	210	500	944	754	1215	205
6	111	914	810	260	315	600	1205	945	1520	410
8	146	1022	1010	290	410	600	1410	1120	1880	770
10	184	1270	1220	360	530	700	1679	1319	2170	1370
12	219	1422	1400	400	575	600	1842	1442	2418	2120
14	241	1118	1540	315	650	700	1906	1591	2661	2660
16	276	1245	1650	350	685	700	2019	1669	2779	3060

### Note

All dimensions are in mm.