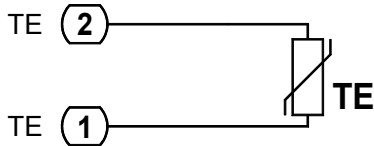


**TEHR xxx -Pxxx modelling.**

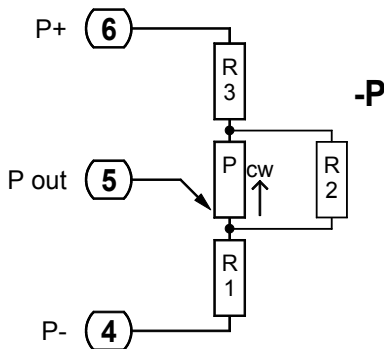
(Ordering example: TEHR NTC 10 -P -S5R -N)

<b>TEHR</b>					
Room casing	1.) Temperature element	2.) Potentiometer	3.) Option 1	4.) Option 2	



**1.) Selection of temperature element**

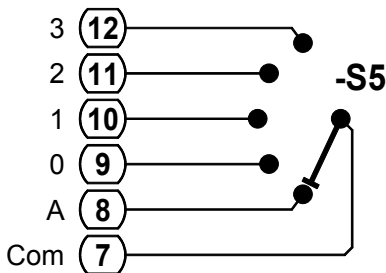
	Temperature Element
	<input style="width: 90%;" type="text"/>



**2.) Selection of potentiometer and fitting resistors**

	Potentiometer value
	<input style="width: 90%;" type="text"/>

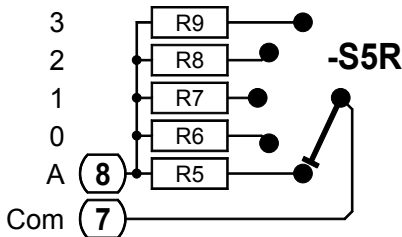
Fitting resistors		(Select minimum R1 = 0 ohm)
R3	ohm	Resistors are available from E96 series
R2	ohm	
R1	ohm	



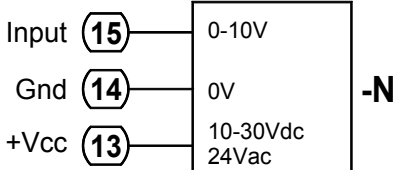
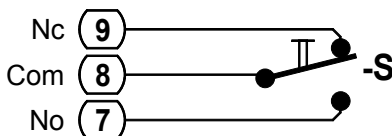
**3.) Selection of -S5 or -S5R or -S switch**

<b>-S5</b>	<input type="checkbox"/>
	5-stage switch

<b>-S5R</b>	<input type="checkbox"/>		
	5-stage switch with resistance output		
Stage	Resistor	Standard	Custom values
<b>3</b>	<b>R9</b>	7 kohm	ohm
<b>2</b>	<b>R8</b>	6 kohm	ohm
<b>1</b>	<b>R7</b>	5 kohm	ohm
<b>0</b>	<b>R6</b>	4 kohm	ohm
<b>A</b>	<b>R5</b>	3 kohm	ohm

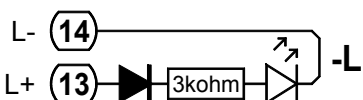


<b>-S</b>	<input type="checkbox"/>
	Push button



**4.) Selection of display or signal led**

<b>-N</b>	<input type="checkbox"/> LCD-Display
	Input 0...10V =



<b>-L</b>	<input type="checkbox"/> Signal led 24 Vac/dc
<b>Colour:</b>	<input style="width: 90%;" type="text"/>