



K-BALL

Brass ball valves, full bore, screwed ends, for utility services. EN331 certified.

Features

- Hot stamped brass body, nickel plated.
- All trim components are of brass.
- Female to female ends with ISO 7/1-Rp threads.
- Full bore design for low pressure loss.
- 3-stage stem seal arrangement combining PTFE and O-ring seals.
- Suitable for vacuum to 10⁻³ torr.
- Suitable for flow in either direction.
- PTFE seats for low torque operation with bubble tight shut-off.
- Positive 90° lever stops integral with body.
- Valves tested to ISO 5208 (6 bar air).
- Steel handle, PVC coated.

Options

- T-handle available on valve sizes 1/4" to 1".
- End connections female/male.
- Female to female ends, NPT threads, non-nickled body.
- Other options available.



Application

B17 - Suitable for general on/off services on utility applications such as gas, water, etc.

Certified in accordance with EN331 for Natural Gas applications

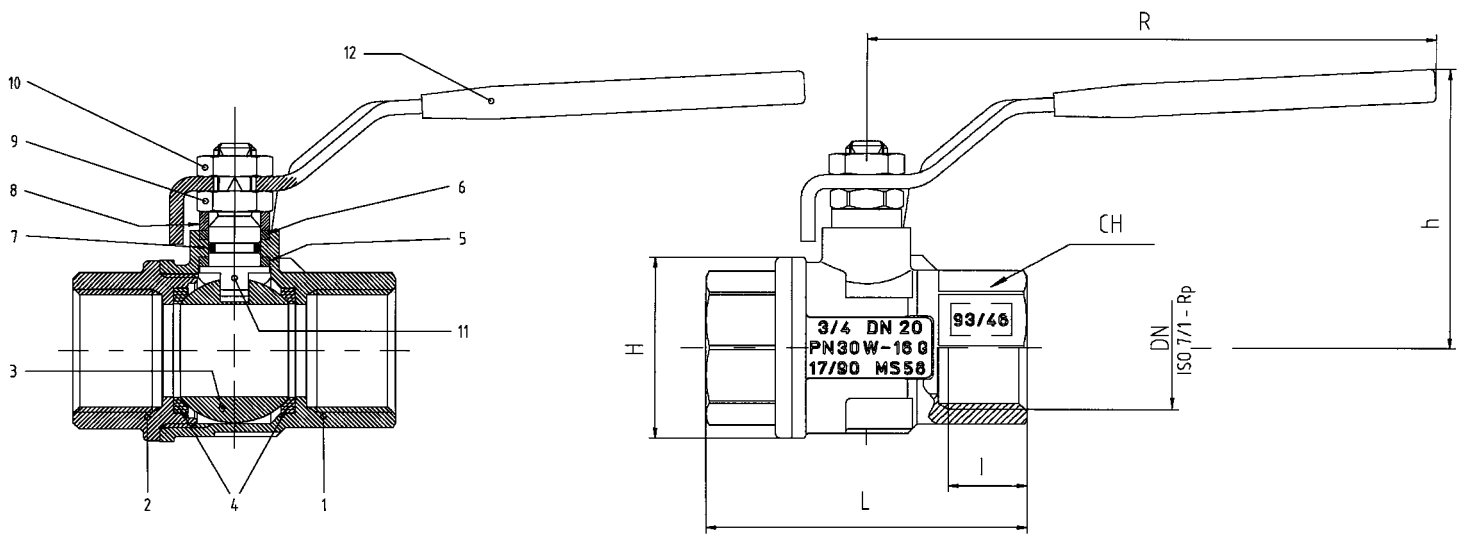
Complies with the Essential Requirements of the European Gas Appliance Directive 90/396/EEC

Technical Data

Size range	DN 8 - 100 1/4" - 4"
Maximum pressure	PN rating varies by valve size (see table page 2)
Temperature range	-20°C to +160°C
Maximum vacuum	10 ⁻³ torr
Seat material	PTFE

Fig B17 Brass Ball Valves

materials of construction - valve dimensions



Materials of construction

Pos.	Part name	Materials	NoP.
1	Body	UNI EN 12165 CW617N (Nickel Plated)	1
2	End connection	UNI EN 12165 CW617N (Nickel Plated)	1
3	Ball	UNI EN 12165 CW617N (Chrome Plated)	1
4	Seat	PTFE	2
5	Stem seal	PTFE	1
6	Packing	PTFE	1
7	'O' ring	NBR	1
8	Packing gland	EN 12164 CW614N	1
9	Nut	Steel	1
10	Nut	Steel	1
11	Stem	EN 12164 CW614N (Nickel Plated)	1
12	Handle	ZINC Plated Steel + PVC	1

Dimensions

DN	I	L	H	CH	R	h	Kv	Cv	PN	Weight (Kg)	
8	1/4"	11	51.5	23	20	98	44.5	5.4	6.3	63	0.15
10	3/8"	11.4	51.5	23	20	98	44.5	6	7	63	0.13
15	1/2"	15	62	32	25	98	48	16.3	19	25	0.22
20	3/4"	16.3	69	39	31	122	58	29.5	34	25	0.36
25	1"	19.1	83	49	38	122	62	43	50	25	0.55
32	1 1/4"	21.4	96	59	48	153	78	89	103	25	1.00
40	1 1/2"	21.4	108	73	54	153	85	230	267	25	1.50
50	2"	25.7	126	86	67	162	96.5	265	307	25	1.98
65	2 1/2"	30.2	152	111	90	205	120	540	626	16	3.70
80	3"	33.3	177	136	105	205	131.5	873	1013	16	5.90
100	4"	39.3	214	166	130	260	165	1390	1612	16	10